

Standard tanks (three internal stainless steel heat exchangers)

Type	Volume	Height	Width	Weight
T 410-13	345 gal.	77"	51"	330 lb.
T413-22	541 gal.	77"	59"	410 lb.
T 415-28	730 gal.	77"	67"	460 lb.
T 417-37	940 gal.	77"	76"	520 lb.
T 419-45	1200 gal.	77"	87"	600 lb.

Large size tanks (special order)

Type	Volume	Height	Width
T 425-115	3000 gal.	9.1'	9.8'
T 435-224	6100 gal.	9.1'	13'
T 440-293	8004 gal.	9.1'	14.7'
T 440-387	10630 gal.	11.8'	14.7'

Haase design

Assembled on site.
 Customized tank sizes.
 Fits easy through every door.
 Stainless steel heat exchangers.
 Standard tanks come with three internal heat exchangers.

Haase size

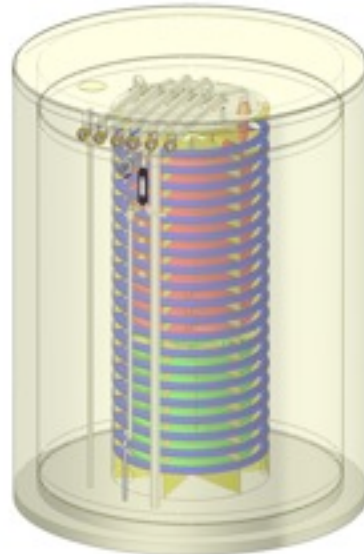
Large storage capacity.
 Tanks from 345 to 12000 gallons.
 Maximizes your available space.

Haase efficiency

Save up to 40-70% on fossil fuel costs.
 Outstanding heat-loss rate of 0.8K in 24 hours.
 Heat-efficient fiberglass design and insulation.
 High flow-rate heat exchangers.

Haase quality

20-year limited warranty.



HAASE Energy Tank

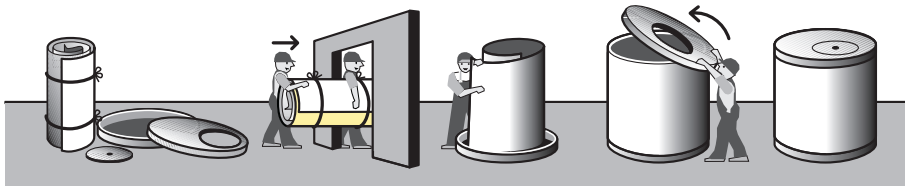


Haase means green

For over 15 years Haase Tank has been providing superior green energy in Germany. To continue our mission of conserving fossil fuels and providing cost-efficient heating and cooling, we have created the Haase Energy Tank. The German-engineered and manufactured Haase Energy Tank is a heat storage solution for both residential and commercial use. Our energy tank will save you up to 40-70% on fossil fuel costs.

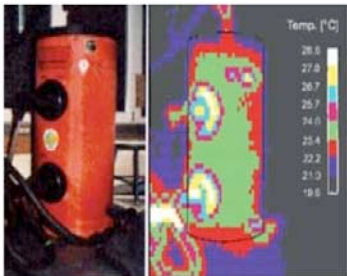
easy through every door

Not only does the Haase Energy Tank decrease the use of fossil fuels and save you money, it also boasts an accommodating installation. The Haase Energy Tank fits through most small spaces and is assembled on site by Haase-approved installers. Other tanks result in extensive building renovations, more installation time, and very often too small of a tank. A confined corridor, a steep staircase or a narrow doorway poses no problems for the Haase Energy Tank. And we offer a wide choice of tank sizes from 345 to 12000 gal.

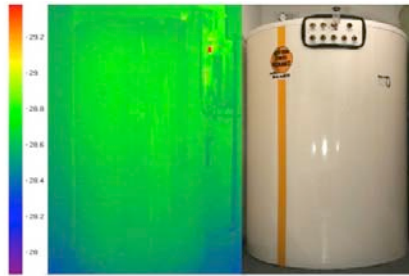


Haase efficiency

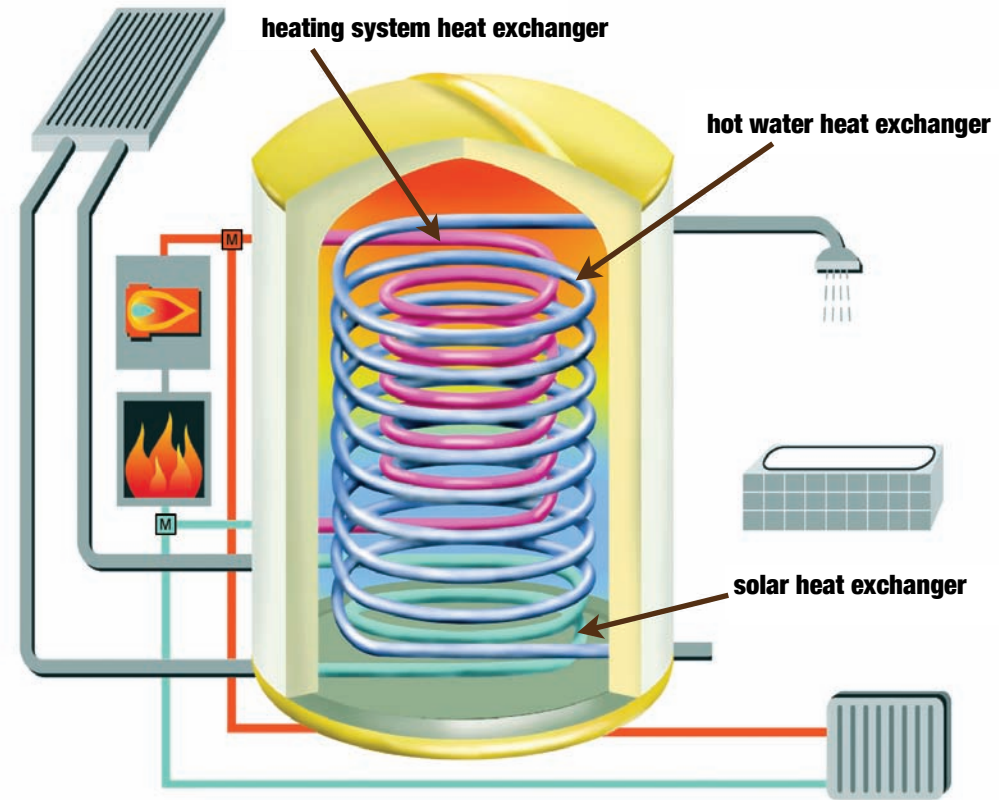
With a heat-loss rate of only 0.8K in 24 hours, the Haase Energy Tank proves its superior heat insulation over other tanks. The increased efficiency is made possible by our unique fiberglass tank, which greatly reduces the heat-loss rate far below that of steel tanks. (see comparison below)



Thermal image steel tank



Thermal image Haase Energy Tank



Haase design

With over 15 years of manufacturing success in Germany in both residential and commercial applications, the Haase Energy Tank is now available in the United States. The tank's unique modular method of construction and its superior energy conservation make it the most sensible choice for cost-effective energy creation and storage.

The Haase Energy Tank is a pressure-free tank with internal heat exchangers made from high-grade steel corrugated pipe. The tank's interior wall is prefabricated using fiberglass reinforced plastic (FRP) and wrapped in 6-10" of fiberglass insulation for maximum heat retention. A final PVC outer shell completes the tank.

Delivered in individual parts and assembled on site, our flexible design allows for larger tanks to be installed in areas not normally accessible, ensuring optimum usage of available space to increase cost efficiencies.

For maximum versatility, the Haase tank is designed to work with virtually any heating system or heat source including: solar collectors, solid fuel burners, alternative fuel boilers, oil burners, heat pumps and block-type thermal power stations.